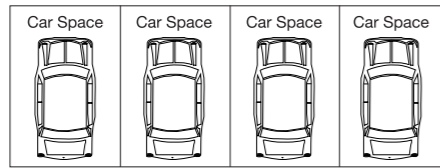
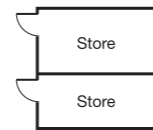


272 m2 with  
40 m2 of balconies (approx)

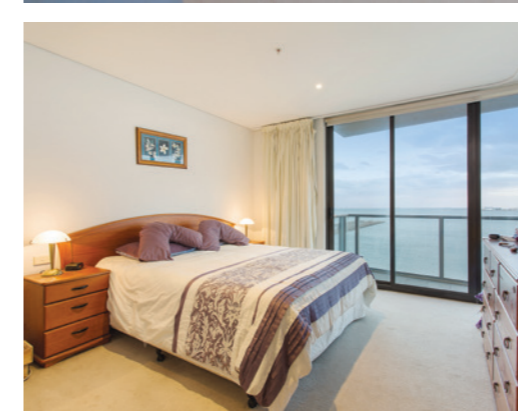
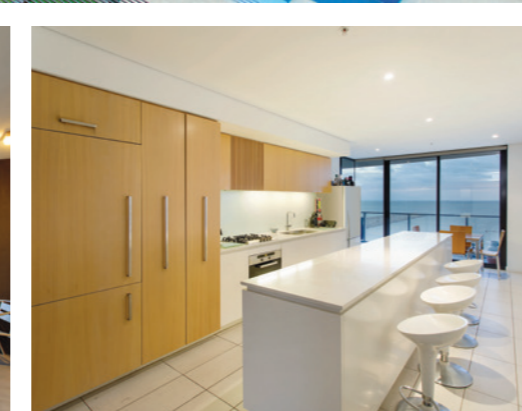
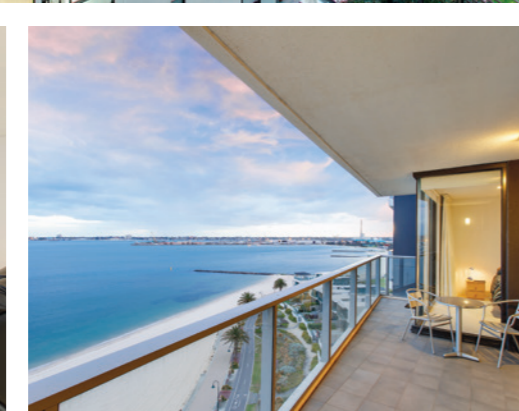


(Not To Scale and Not In Position)



(Not To Scale and Not In Position)





**HUGE APARTMENT APPROXIMATELY 272 M2 OFFERING EXCEPTIONAL WATER FRONT LIVING.**

- Absolute beachfront, the entire 8th level centre of the building
- Approximately 40 m2 of balconies
- Four premium,secure side by side car parks, two large store cages

Security entrance with direct lift access. Four bedrooms, including two master bedrooms both with ensuites, walk-in robes, enjoying bay views, the other two bedrooms facing north enjoying city skyline views, plus separate study/retreat. Main central bathroom plus separate powder room, ample storage.

Impressive open plan living room with separate dining area, all with expansive floor to ceiling windows taking full advantage of Port Phillip Bay and beyond. Fully equipped gourmet kitchen with Euro appliances, integrated fridge, ample storage with casual meals area, large separate laundry.

<b>Inspection</b>	By appointment	
<b>Contact</b>	Andrew Turner	0408 211 281
	Geoff Cayzer	9690 9782
<b>Mel Ref</b>	56 J3	